



C A M B R I A[®]

| BATHROOM PARTITION GUIDE |





Installation of Restroom Partitions

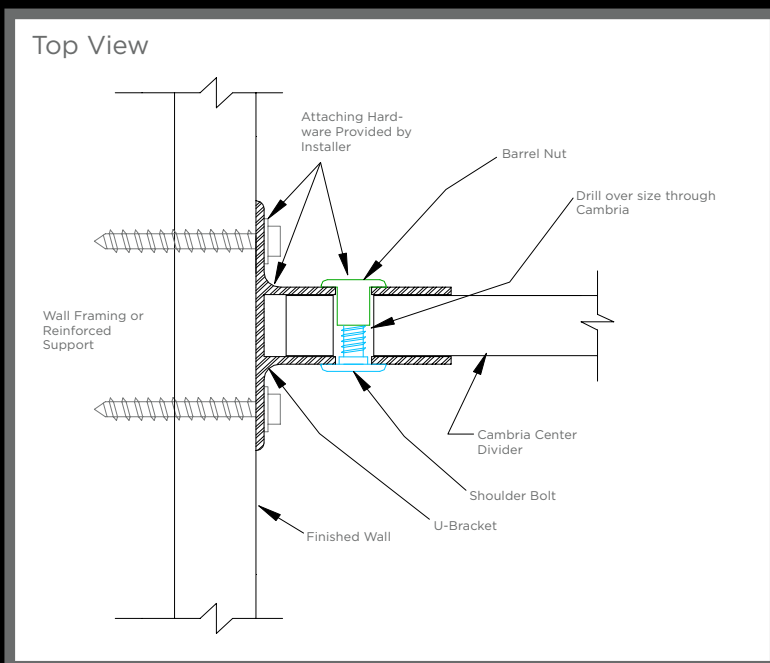
OBJECTIVE: Outline the use of Cambria Product for a restroom partition and or screen.

NOTE: Cambria is not a structural support material and must be properly adhered to a proper substrate and properly supported by structural support material sufficient to hold the weight of Cambria.

WALL MOUNTING

1. Bathroom Dividers will be attached to a reinforced wall that will bear the weight of the Cambria. Two Ear U-Brackets will be used to mount the Cambria to the wall in combination with a shoulder bolt and barrel nut. The hole drilled through the Cambria will be oversized to allow a slip fit for shoulder bolts and barrel nuts. See Top View Illustration 1.

ILLUSTRATION 1



The information provided here by Cambria is to be used solely as basic installation guidelines. It is not intended as detail-specific instruction for a given application. You alone are responsible for the quality, workmanship, safety and reliability of your work. Cambria assumes no responsibility, wholly or partly for any of the design, safety or workmanship of the installation. If you have any questions, contact Cambria Customer Care at **866-Cambria**.

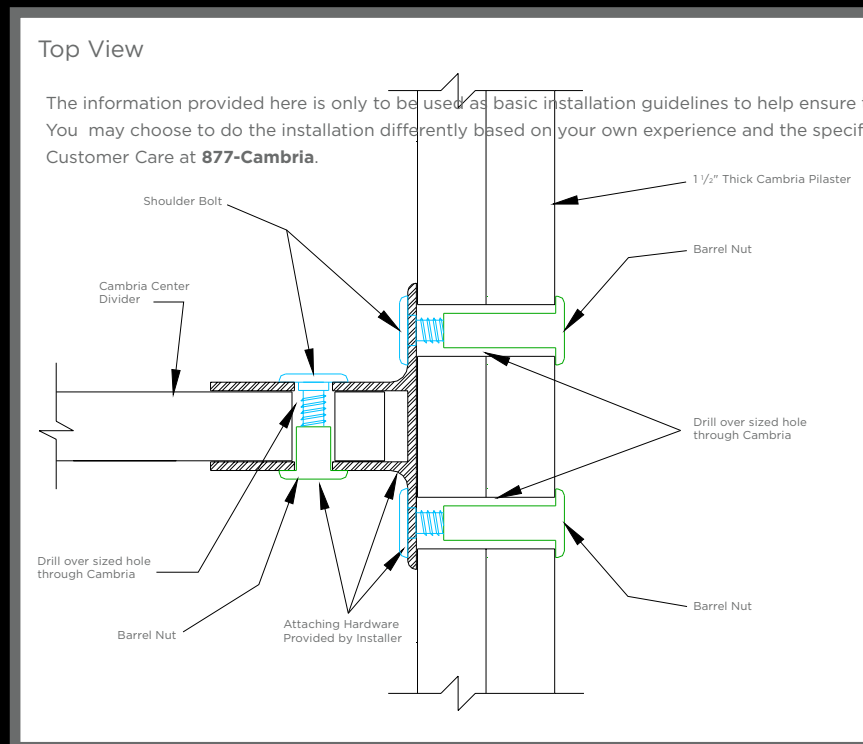


Installation of Restroom Partitions

DIVIDER TO PILASTER MOUNTING

- The Cambria Bathroom Center Divider will be attached to the back of the Cambria Pilaster using a Two Ear U-Brackets in combination with shoulder bolts and barrel nuts. The holes drilled through the Cambria will be oversized to allow a slip fit for the shoulder bolts and barrel nuts. See the Top View Illustration 2.

ILLUSTRATION 2



The information provided here by Cambria is to be used solely as basic installation guidelines. It is not intended as detail-specific instruction for a given application. You alone are responsible for the quality, workmanship, safety and reliability of your work. Cambria assumes no responsibility, wholly or partly for any of the design, safety or workmanship of the installation. If you have any questions, contact Cambria Customer Care at **866-Cambria**.

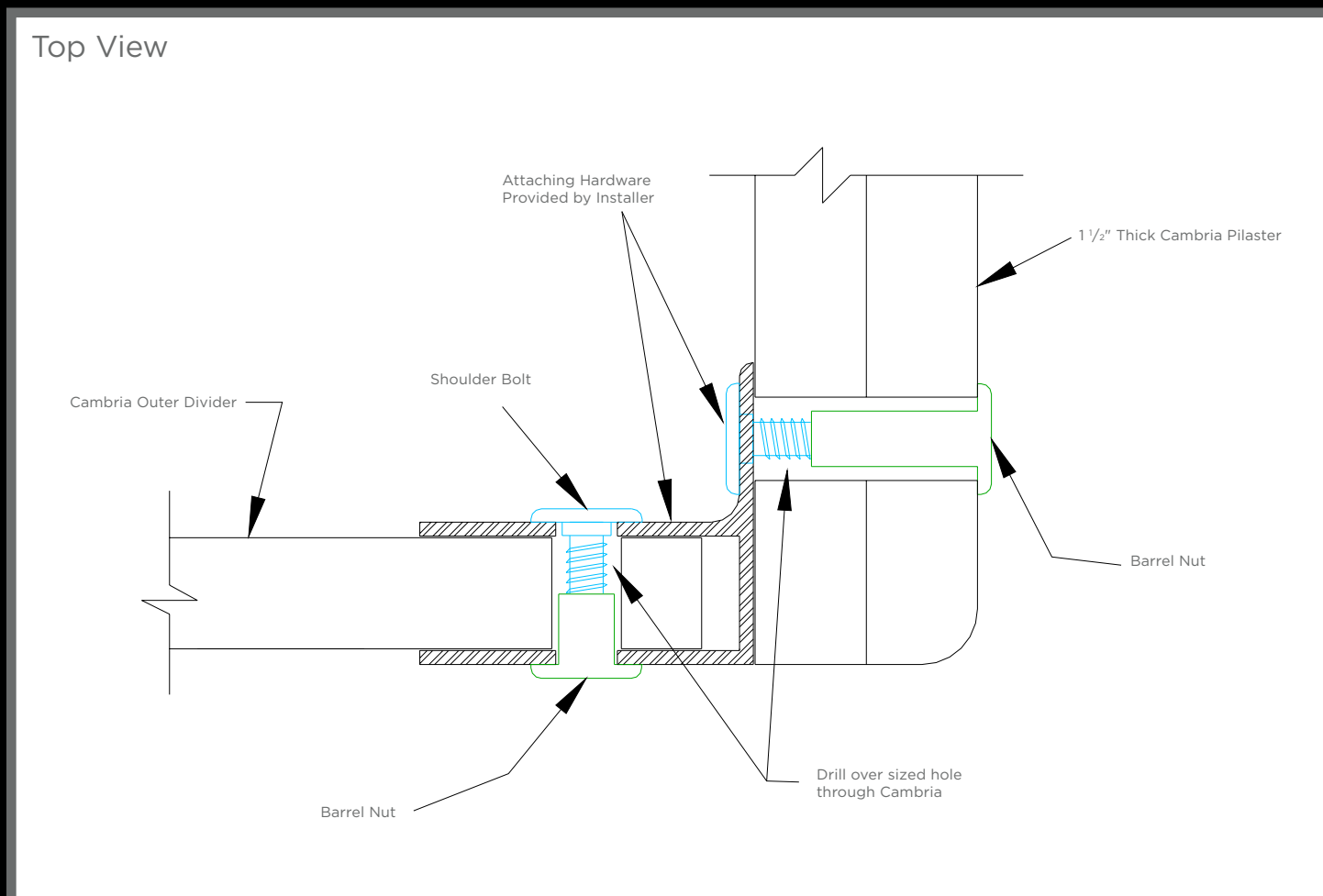


Installation of Restroom Partitions

OUTER DIVIDER TO PILASTER MOUNTING

- Cambria Bathroom Outer Dividers will be attached to the back of the Cambria Pilaster using a One Ear U-Bracket in combination with shoulder bolts and barrel nuts. The holes drilled through the Cambria will be oversized to allow a slip fit for the shoulder bolts and barrel nuts. See the Top View Illustration 3.

ILLUSTRATION 3



The information provided here by Cambria is to be used solely as basic installation guidelines. It is not intended as detail-specific instruction for a given application. You alone are responsible for the quality, workmanship, safety and reliability of your work. Cambria assumes no responsibility, wholly or partly for any of the design, safety or workmanship of the installation. If you have any questions, contact Cambria Customer Care at **866-Cambria**.

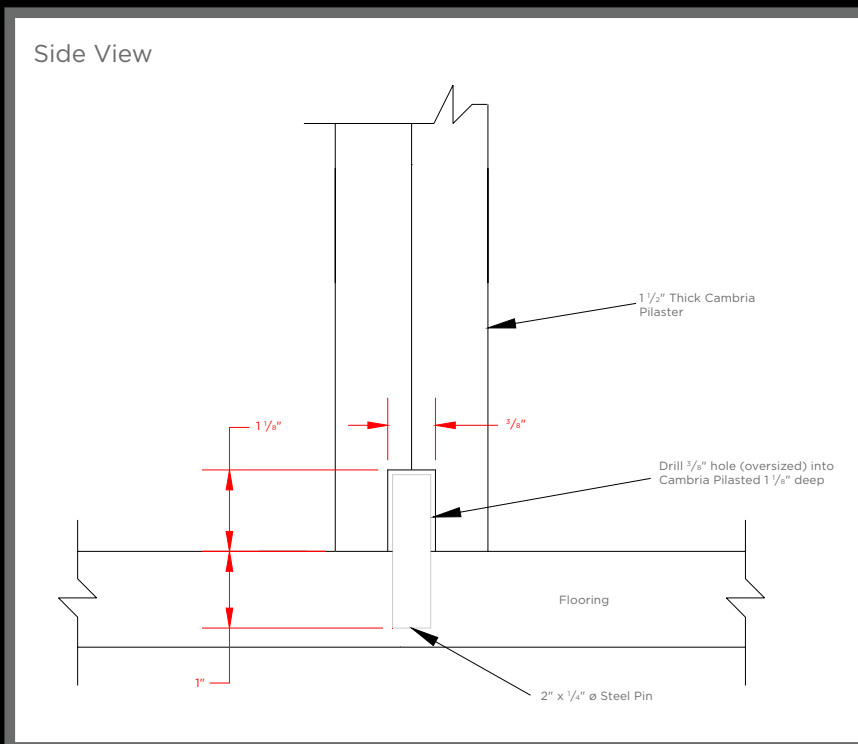


Installation of Restroom Partitions

FLOOR MOUNTING

4. The Cambria Pilaster will be attached to the flooring using a steel pin to ensure the pilaster cannot move. The hole drilled through the Cambria will be oversized to allow a slip fit for the steel pin. See Side View Illustration 4.

ILLUSTRATION 4



The information provided here by Cambria is to be used solely as basic installation guidelines. It is not intended as detail-specific instruction for a given application. You alone are responsible for the quality, workmanship, safety and reliability of your work. Cambria assumes no responsibility, wholly or partly for any of the design, safety or workmanship of the installation. If you have any questions, contact Cambria Customer Care at **866-Cambria**.

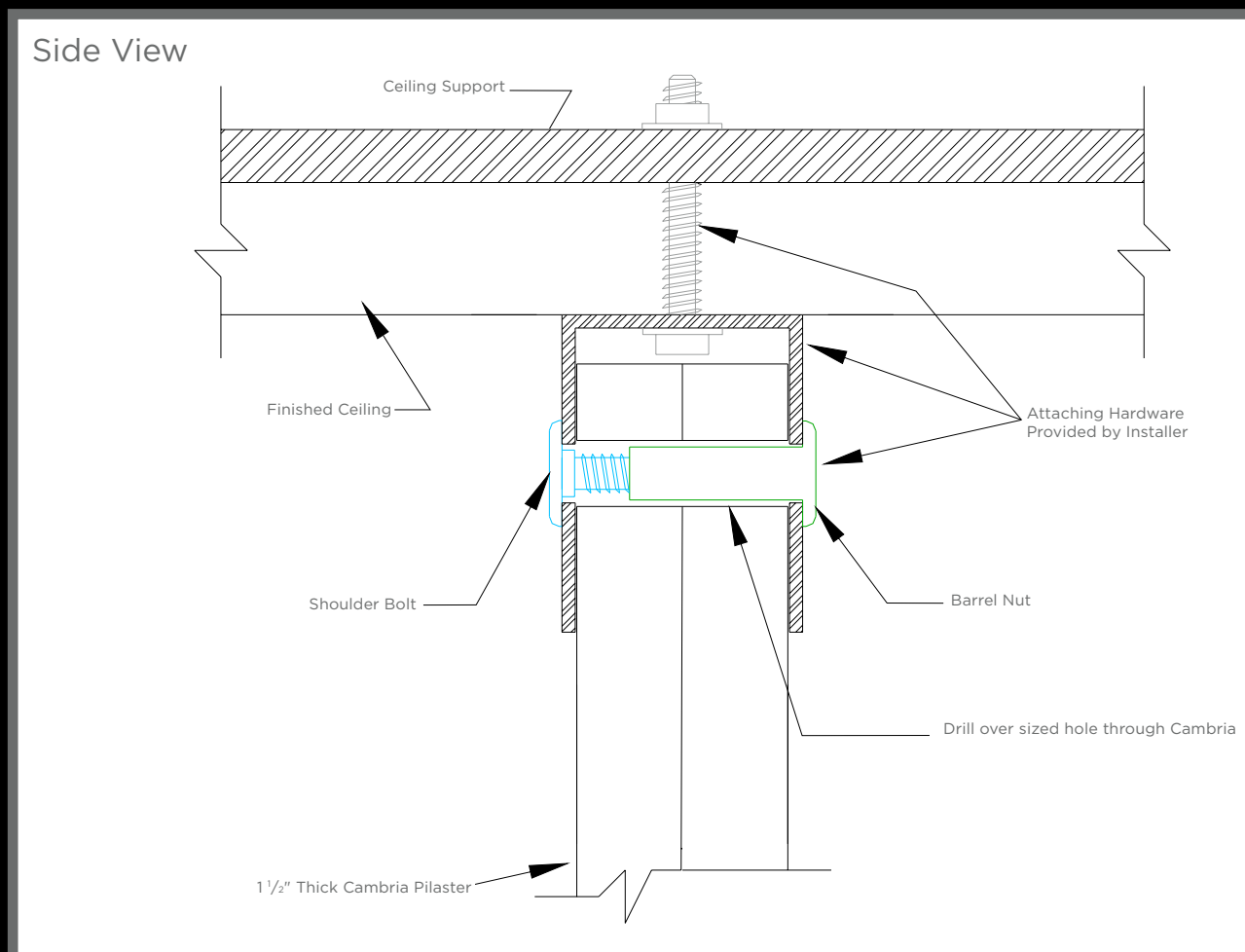


Installation of Restroom Partitions

CEILING MOUNTING

- The Cambria Pilaster will be attached to the ceiling using a U-Bracket in combination with a shoulder bolt and barrel nut. The hole drilled through the Cambria will be oversized to allow a slip fit for the shoulder bolt and barrel nut. See the Side View Illustration 5.

ILLUSTRATION 5



The information provided here by Cambria is to be used solely as basic installation guidelines. It is not intended as detail-specific instruction for a given application. You alone are responsible for the quality, workmanship, safety and reliability of your work. Cambria assumes no responsibility, wholly or partly for any of the design, safety or workmanship of the installation. If you have any questions, contact Cambria Customer Care at **866-Cambria**.

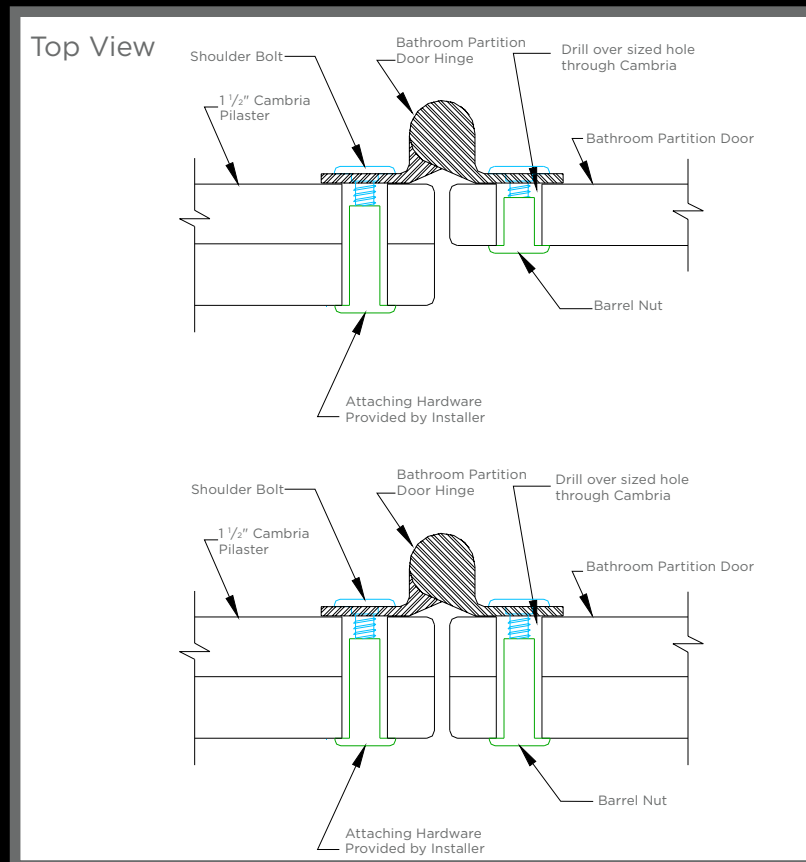


Installation of Restroom Partitions

DOOR HINGE HARDWARE MOUNTING

6. The Cambria Bathroom Partition Door will be attached to the Cambria Pilaster using a hinge bracket in combination with a shoulder bolt and barrel nut. The hole drilled through the Cambria will be oversized to allow a slip fit for the shoulder bolt and barrel nut. See the Top View Illustration 6 for examples of Bathroom Partition Door mounting.

ILLUSTRATION 6



The information provided here by Cambria is to be used solely as basic installation guidelines. It is not intended as detail-specific instruction for a given application. You alone are responsible for the quality, workmanship, safety and reliability of your work. Cambria assumes no responsibility, wholly or partly for any of the design, safety or workmanship of the installation. If you have any questions, contact Cambria Customer Care at **866-Cambria**.

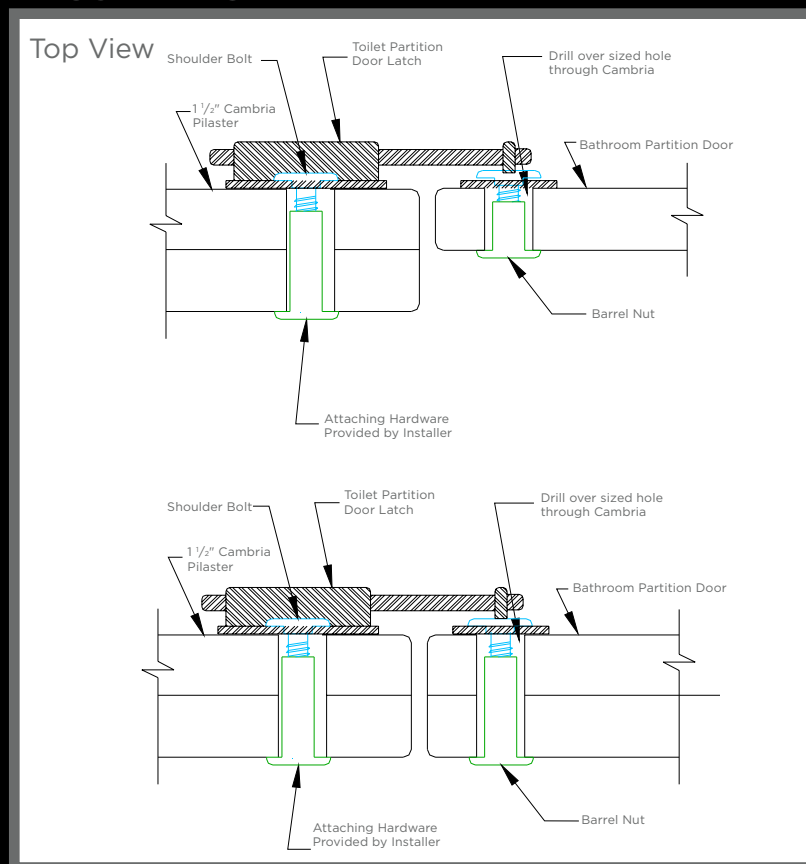


Installation of Restroom Partitions

LATCH HARDWARE MOUNTING

7. The Bathroom Partition door latch will be attached to the Cambria Pilaster and the Cambria bathroom partition door using shoulder bolts and barrel nuts. The hole drilled through the Cambria will be oversized to allow a slip fit for the shoulder bolt and barrel nut. See the Top View Illustration 7 for examples of bathroom partition door latch mounting.

ILLUSTRATION 7



The information provided here by Cambria is to be used solely as basic installation guidelines. It is not intended as detail-specific instruction for a given application. You alone are responsible for the quality, workmanship, safety and reliability of your work. Cambria assumes no responsibility, wholly or partly for any of the design, safety or workmanship of the installation. If you have any questions, contact Cambria Customer Care at **866-Cambria**.